

Alice Neel Inspired Portraits

ASP

Ms. MacLure

Objective: You will create an intimate portrait of a friend or family member. This work should represent the individual in a personal way. Students should create a unique source of light or innovative color use.

Objective (1.9): Demonstrate the ability to create 2D artworks that show knowledge of unique characteristics of particular media, materials, and tools



Alice Neel- (January 28, 1900 – October 13, 1984) was an American visual artist, who was known for her portraits depicting friends, family, lovers, poets, artists and strangers. Her paintings have an expressionistic use of line and color, and emotional intensity.

During the Great Depression, Neel gained popularity for participation in government programs like The Public Works of Art Project where she painted in a realist style and her subjects were mostly Depression-era street scenes and Communist thinkers and leaders. She is considered one of the greatest portrait artists of the 20th century.

Materials : Pencil and charcoal for sketching.
Acrylic paint for final piece

OVERVIEW

They say that humans spend 95% of their lives in un-eventful moments, but we as humans usually document the only the most eventful moments such as, birthdays, graduations, births, and special occasions. As artist, we have the opportunity to make these ordinary moments extraordinary. Looking at human nature can be very interesting if you choose to look closely. Students will create a figurative work based on a simplistic time in a friend or family member's life. The overall goal is to connect the viewer with the person represented in the work.

Through a series of in-class clothed figure drawing sessions, you will learn the basics of anatomy and explore the human form through drawing.

Gesture drawing- drawing something quickly, and economically to give as much information as possible with as few marks as possible.



Demos/ In-class Exercises

1. Gesture drawing and the human form
2. Overview of master drawings of the figure and their approaches.
3. Lighting your subject.
4. Composing art from your drawings and reference photos.

Contact: Questions? Email Ms. Mac at amaclure@valleytech.k12.ma.us

Alice Neel Portraits

ASP
Ms. MacLure



Use the following steps...

-During class, students will take turns and model for one another to practice gesture drawing and understanding the human figure. (DEMO)

-**For homework:** Choose a subject for this project. Ask them to pose for you and do a series of 20 one minute gesture drawings of them. Be sure to light them in an interesting manner. You can use any kind of spotlight, such as a desk lamp or flashlight...or candle. Make it interesting! Your sketches of them should have variety full body, details etc. You will use these for reference later on your final piece. Lastly, photograph your subject--you can use a phone. (DEMO)

-Upon returning to class, have your resources from above ready. In class you will complete 3 thumbnails to decide on composition as well as 3 color sketches. (DEMO)

-Choose a size and orientation for your final piece. Begin by sketching it out, remembering the basic rules of G.L.O.S.S, you can bring your final piece!

Assessment:

-Overall design/composition: **15 pts**

-Originality: **20 pts**

-Craftsmanship: **20 pts**

-Creates a connection for the viewer **15pts**

-Strong sense of light source: **15 pts**

-Used care with art materials: **15 pts**



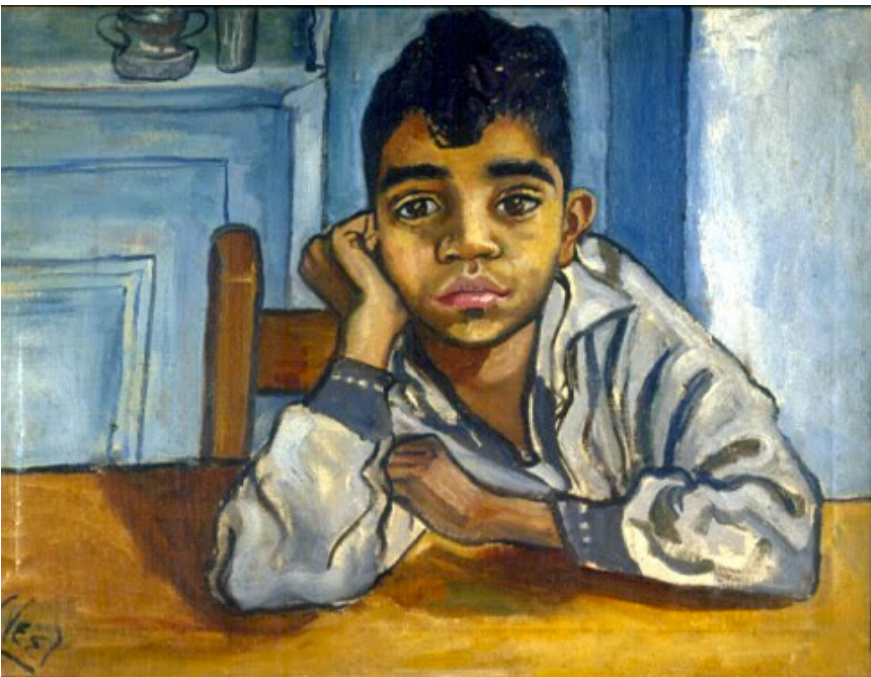
Contact: Questions? Email Ms. Mac at amaclure@valleytech.k12.ma.us

Alice Neel Portraits Homework

ASP
Ms. MacLure

Choose a subject for this project.

1. In your sketchbook- reflect upon the following:
Who are you choosing as a subject and why? When is this person their most vulnerable? What makes them especially interesting to you? What do you admire about them?
2. Ask them to pose for you and do a series of **20 one minute gesture drawings of them**. Be sure to light them in an interesting manner. You can use any kind of spotlight, such as a desk lamp or flashlight...or candle. Make it interesting! Your sketches of them should have variety- do a few featuring the full body and some featuring details such as the face etc. You will use these for reference later on your final piece.
3. Lastly, photograph your subject--you can use a phone.
4. Bring all of this to class tomorrow- you will need these resources to continue with the project.



Contact: Questions? Email Ms. Mac at amaclure@valleytech.k12.ma.us

Alice Neel Portraits Gesture Drawing Examples

ASP
Ms. MacLure



Contact: Questions? Email Ms. Mac at amaclure@valleytech.k12.ma.us

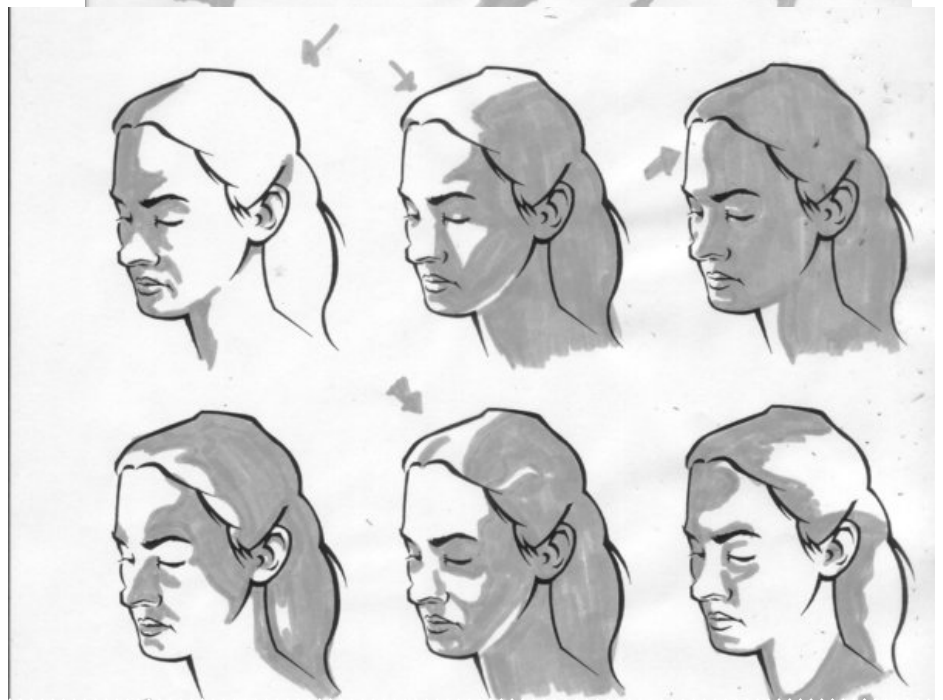
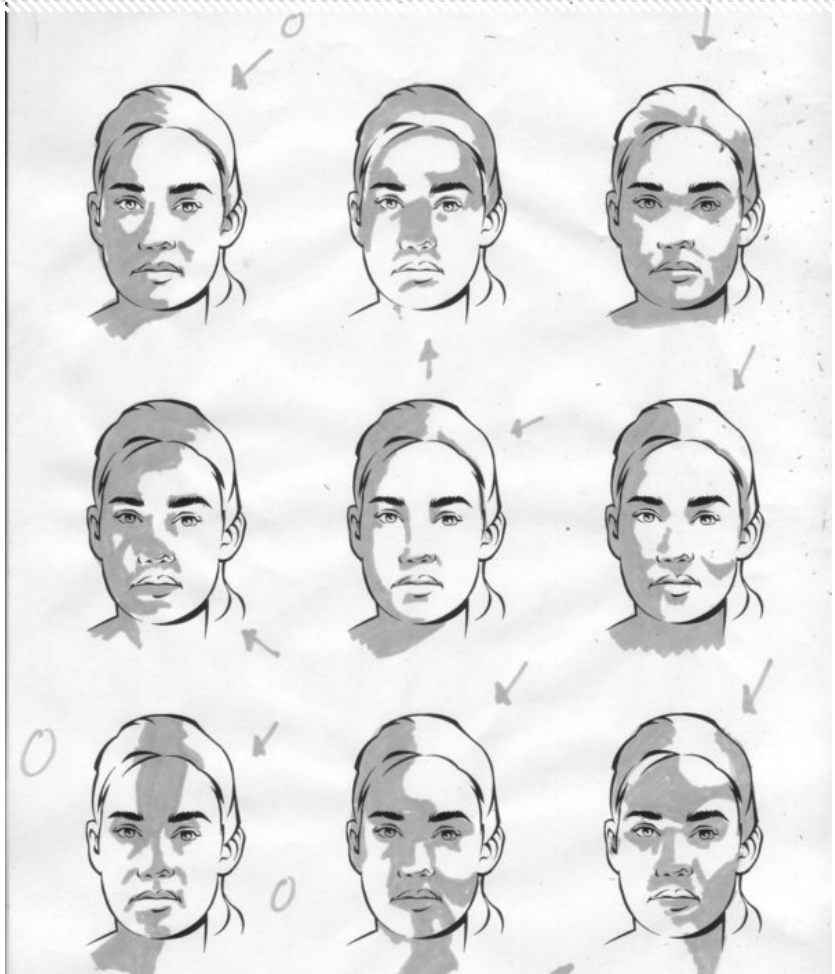
Alice Neel Portraits

Portrait Lighting Guide

ASP
Ms. MacLure

This Portrait Lighting Guide by Charlie Kirchoff will be helpful in deciding what kind of light you want to cast your subject in. The arrows around the faces show you where each light source is coming from.

Think about how light (or the absence of light) affects the mood of the piece. Do you want your subject to look hopeful? Ominous? Suspicious? Light



Contact: Questions? Email Ms. Mac at amaclure@valleytech.k12.ma.us