



Wangechi Mutu Self Portrait

ASP

Ms. MacLure

Objective: Using Mutu's mixed media portraits for inspiration, students will create a meaningful

Frameworks Objective (3.11): Demonstrate the ability to portray emotions and personality through the rendering of physical characteristics in 2D



Demos/ In-class Exercises

1. Drawing the face and its expressions
2. Composing a new drawing from your reference drawings.
3. Creating a believable, but surreal image.

OVERVIEW

Wangechi Mutu: (1972) Wangechi Mutu's work crosses a variety of mediums, including collage, video, performance, and sculpture, and investigates themes of gender, race, and colonialism. A recurring theme of Mutu's work is her various depictions of femininity. Mutu uses the feminine subject in her art, even when the figures are more or less unrecognizable, whether by using the form itself or the texture and patterns the figure is made from collaged elements.

Mutu is from Kenya, and currently resides and works in Brooklyn NY.

When viewing Mutu's work, look closely at how she composing new faces from existing ones. She creates discomfort, intrigue and curiosity in her viewers. You will do the same, except without collage, and by drawing your own facial expressions.



Materials : Colored Pencils, paper.

Contact: Questions? Email Ms. Mac at amaclure@valleytech.k12.ma.us

Wangechi Mutu

Self Portrait

ASP
Ms. MacLure



Use the following steps...Demos will be given for each.

-After looking closely at Mutu's work, and student examples, begin by doing 10 different gesture drawings of different expressions you make in a mirror, in your sketchbook. Allow these to be extremely loose.

-With tracing paper, combine 5 of these gestures to create a whole new face- tracing bits and pieces from each gesture.

-Now complete 3-5 detailed line drawings of your face from different angles and expressions. Use just line, no shading needed yet.

-Upon completing these and using tracing paper, create 3 different possible combinations by tracing from your 3-5 detailed line drawings. Choose your favorite, and begin sketching your final piece on the final paper of your choice.

-Using the techniques you practiced for homework, color your portrait using colored pencil. Use black seldomly if at all. Keep your light source in mind (demo) and mind your background.

Assessment:

-Overall design/composition: **15 pts**

-Originality: **20 pts**

-Craftsmanship: **20 pts**

-Creative combination of facial expressions to create new and surreal image. **15pts**

-Strong sense of light source: **15 pts**

-Used care with art materials: **15 pts**



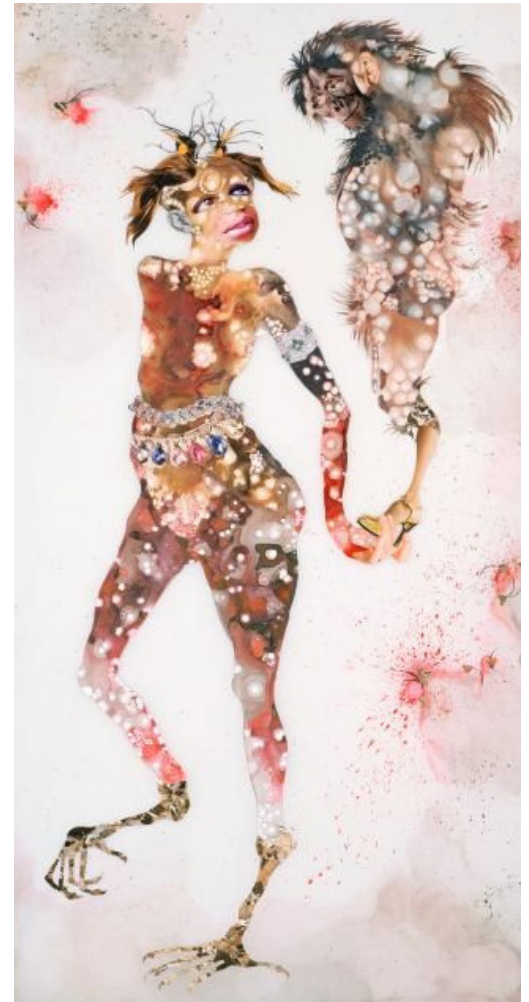
Contact: Questions? Email Ms. Mac at amaclure@valleytech.k12.ma.us

Wangechi Mutu

Self Portrait

ASP
Ms. MacLure

1. In your sketchbook- reflect upon the following:
How do most people see you? How do you wish people would see you? If you could tell people one thing about yourself, what would it be? What facial expressions most reveal your true self?
2. At home, experiment with blending with colored pencils. The more colors your experiment with, the better you'll be prepared. Please fill a page with this experimentation.

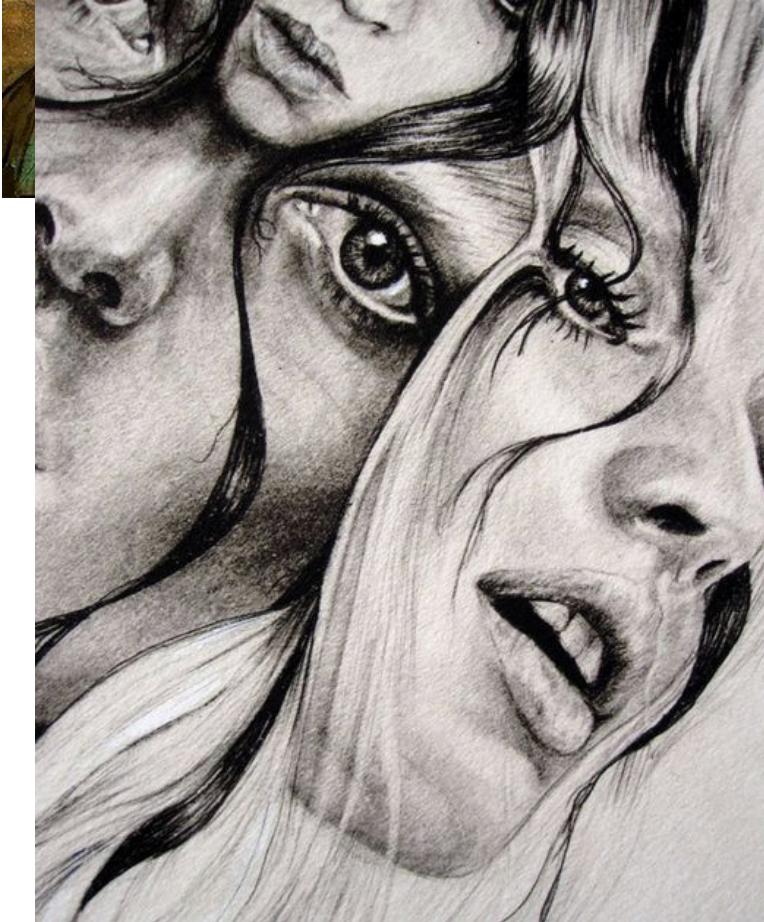
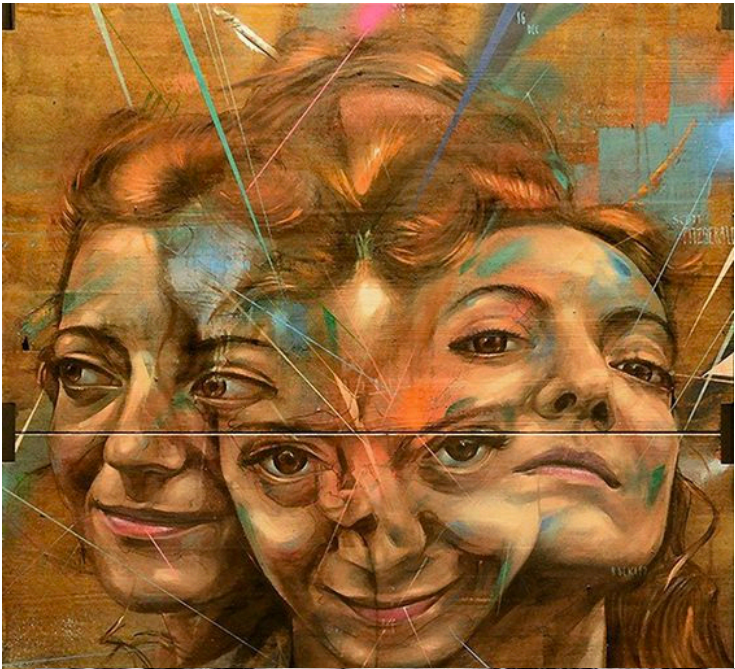


Contact: Questions? Email Ms. Mac at amaclure@valleytech.k12.ma.us

Wangechi Mutu

Self Portrait-student examples

ASP
Ms. MacLure



Contact: Questions? Email Ms. Mac at amaclure@valleytech.k12.ma.us