



Surreal Portraits

2 Dimensional Design
Ms. MacLure

Name:

Objective: You will create a surreal portrait of yourself or someone you know.

Frameworks Objective(3.8): Students will create a portrait using observation and memory that convincingly portrays people and objects in a 3D space.



Materials: Bristol board, paint and oil pastel

Overview:

Surrealism: A twentieth century avante-garde art movement. Surrealist works are meant to be bizarre and as startling as dreams are. They tend to have a realistic approach to make the scene look even more strange.

Salvadore Dali (1904-1989) was essentially the creator of surrealism. Born in Spain, Dali's technique was

heavily influenced by Renaissance paintings, and his concepts driven by his dreams. Dali's work is full of symbolism. His most famous imagery, the "melting watches" that first appear in *The Persistence of Memory* suggest that time is relative and not fixed. The idea for clocks functioning symbolically in this way apparently came to Dali when he was staring at a melting piece of cheese on a summer day. Various animals appear throughout his work as well: ants point to death, decay and locusts are a symbol of waste and fear.



Demos:

1. Sketching out the face-exaggerating features
2. Using oil pastels
3. Color and mood discussion

Mark Ryden: A contemporary illustrator who specializes in surreal portraits, known for blending the same kind of 'old master' painting techniques as Dali. He is known for pioneering the "Pop Surrealism" style in the Illustration world. People are drawn to his work because he mixes innocent symbols (cherub like girls) with stranger dark subjects.

Surreal Portraits

2 Dimensional Design
Ms. MacLure



Use the following steps...

-Decide who you would like to draw. Yourself? A friend? Aim to make a portrait from the head to the shoulders. For a challenge, you can create a whole scene with a full-body portrait.

-Make some sketches for homework. Look at examples in this packet for inspiration. Practice distorting some features while down-playing others.

-When ready, move onto bristol board and do first color layout in acrylic. Use oil pastel for detail (DEMO)

TIPS for a surreal setup: Distort scale, use out-of-place objects (whales flying in the sky for ex), make the scene look “believable” with shading, try remembering a crazy dream you had for inspiration.

Assessment:

-Effort: **25 points**

-Demonstrates a mastery of demonstrating mood with color: **10 pts**

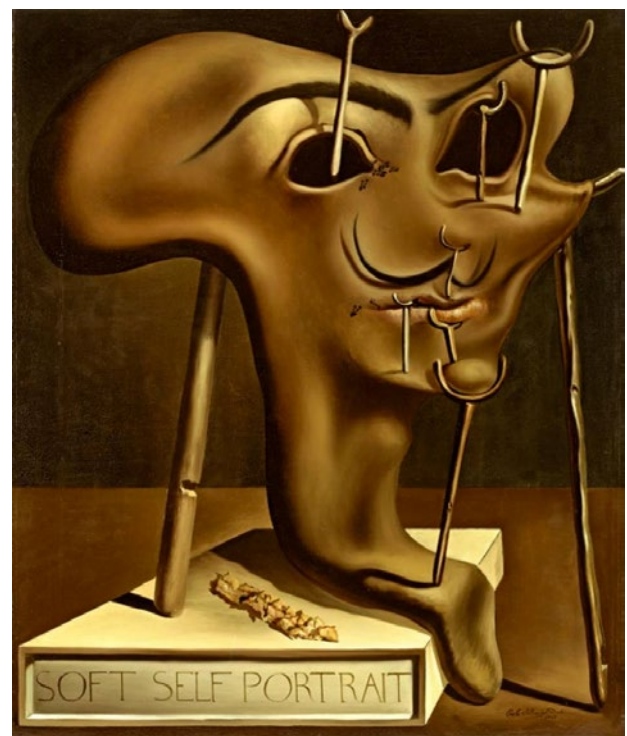
-Set color down in transparent acrylic first- mastered technique: **10 pts**

-Used oil pastel for detail, color nuances: **10 pts**

-Portrait exaggerates basic proportions: **10 pts**

-Background elements are surreal and relate to portrait in foreground **10 pts**

-Used care with art materials: **25 pts**



Surreal Portraits: Examples

2 Dimensional Design
Ms. MacLure



“I am creating with an absolute naturalness, without the slightest aesthetic concern, I am making things that inspire me with a profound emotion and I am trying to paint them honestly.”
-Salvador Dalí,

Contact: Questions? Email Ms. Mac at amaclure@valleytech.k12.ma.us

Surreal Portraits: Homework

2 Dimensional Design
Ms. MacLure

1. Find a Salvadore Dali painting that you like. What is its title, and name 2 symbols in the painting. What do they symbolize? **(15 pts)**
2. What are some of Dali's favorite symbols to use in his paintings? What do they signify? **(15 pts)**
3. Why are symbols so important to use in surreal paintings?**(15pts)**
4. What pop imagery does Mark Ryden frequently use in his work and why? **(15 pts)**
5. Make 2 thumbnail sketches below- one for your portrait, and one for the background to go behind the portrait- must include at least three symbols (personal to you) in your piece. **(20 pts)**

